

BOX DESIGN OF PET RAPID TEST KIT with PROFESSIONAL USE

"The market is in Southeast Asia, South America, Europe, and the U.S."

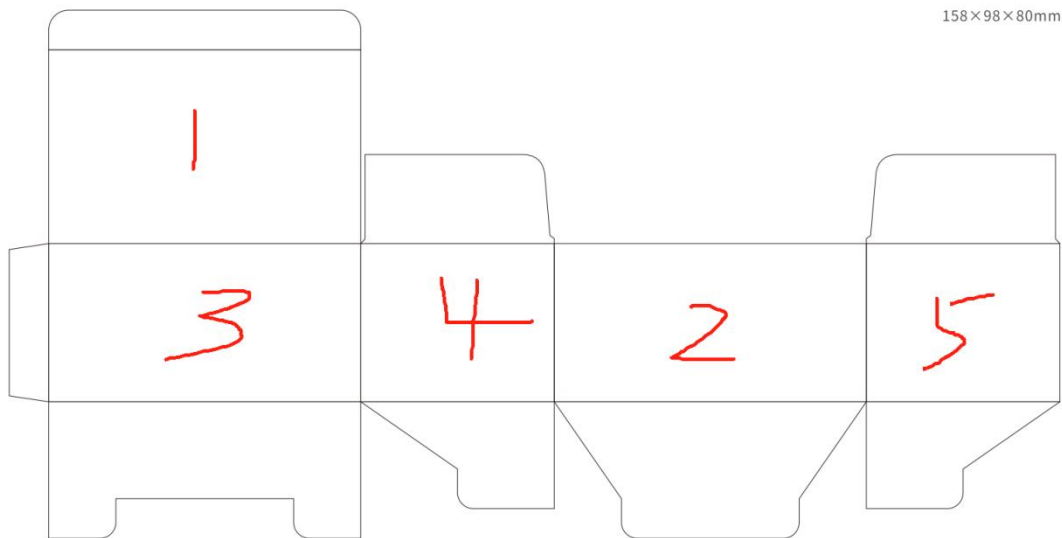
Clients: Veterinary clinics, pet hospitals,(a small number of home use)

Positioned as a budget-friendly yet high-performance choice

Primary colors:

Green,Orange or Blue, (select 1,or 2 color)

Neutrals: Gray, Black or White (optional)



Dimensions:158mm(L)*98mm(W)*80mm(W)

(The following words are just a reference, not 100% according to the words of the content, can be adjusted by the designer)

Page 1:

Pet Check (LOGO)

Canine and Feline Rapid Test Kit

Contents

- (1) Test Kits(Cassette,disposable dropper,desiccant).
- (2) Assay buffer.
- (3) Sterile swabs.
- (4) Instruction manual.

Store at 2~30°C,Avoid direct sunlight

10 Tests/Box



Page 2:

Pet Check

Loved by Pets, Trusted by Vets

Icon:

RESULTS IN 10 MIN

HEALTH CHECK FOR DOG AND CAT

EASY TO USE

GMP ISO

Page 3:

(Design it yourself according to the designer's idea)

Page 4:

Pet Check Rapid Test

Simple & Convenient: no professional skills required, Simple enough for home use.

Fast & Efficient: Digital results in < 10 minutes - from start to completion.

Accurate & Reliable: Quick and trustworthy pet health results using advanced lateral flow biotech, Trusted by vet clinics worldwide.

Supports screening of multiple diseases, Helping pet owners detect issues early.

MADE by VETBLANK™

Loved by Pets, Trusted by Vets

Page 5:

(Sticker/Lable)

Pet Check

Loved by Pets, Trusted by Vets